



KOOL-STOP ORIGINALS®

It Really is "The Best" of Both Worlds!

RK-CP RUNNER KIT

CHILD TRAILER & JOGGER ATTACHMENT

Model No. KS-T2S, TKL, T2PC, T2LT

OWNERS MANUAL AND ASSEMBLY INSTRUCTIONS

Please read & save all instructions contained in this booklet.
Examine all carton contents and wrappings carefully before assembly.

READY, SET...GO!®

Family fun is yours in a snap with your new, snug, sturdy and smooth-riding Child Trailer by KOOL-STOP ORIGINALS INC. This RK-CP Runner Kit will convert your KSO Trailer into a high performance jogging stroller.

Your New Child Trailer and Runner Kit includes these features:

- Folds down, assembles quickly and easily in 1-2 minutes.
- Innovative 5-point harness, fully adjustable for toddler and up.
- Hand brake gives you more control over slowing down or stopping.
- Quick-release hubs.

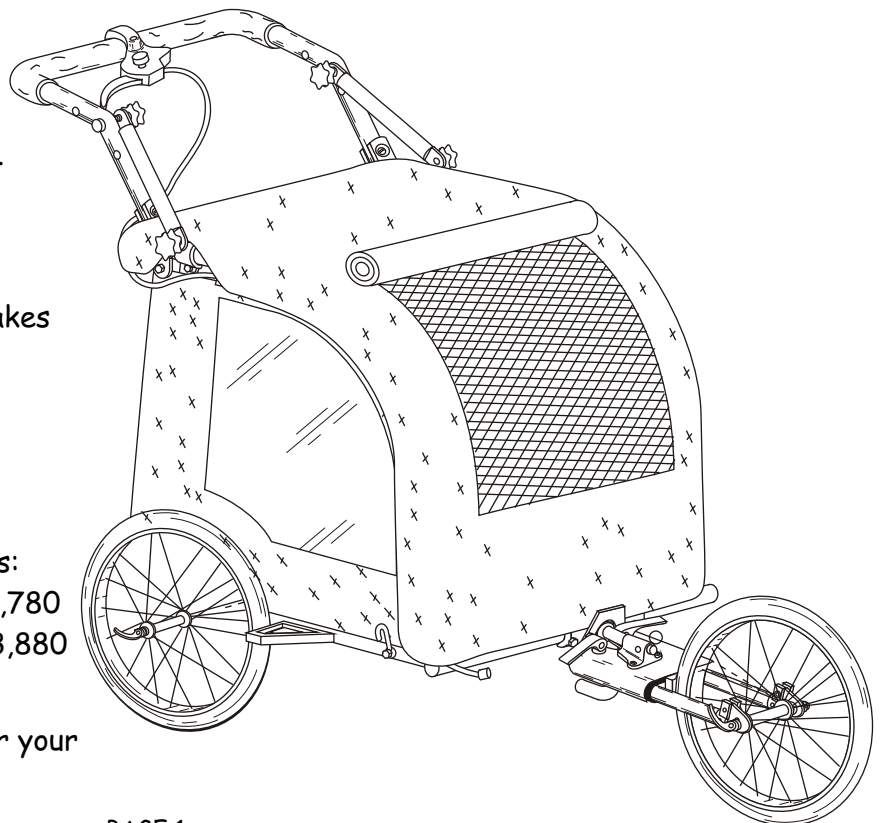
THINK SAFE AND BE SAFE!

- Avoid city streets, heavy traffic and dangerous situations.
- Be sure passenger is properly secured with the seat belt.
- Never allow horseplay or standing up in the stroller.
- Always use the wrist retention strap.
- Never roller-skate while pushing your stroller.
- Never leave your child unattended in the stroller even when parking brakes are engaged.
- Weight limit 150 lbs.(68 kg)

All Child Trailers & Jogging Attachments are Patented and Protected by the Following U.S. And foreign patent numbers:
D419,133 D382,234 D371,094 D418,780
5,536,033 5,695,212 5,934,754 4,953,880

CHILD TRAILER® ACCESSORIES

To see the latest accessories available for your trailer, please visit our website at:
[Http://www.koolstop.com](http://www.koolstop.com)



Assembly Instructions (Fabric not shown for clarity)

Step 1. Installing Receiver Bracket

- A. Remove the two inner bolts from the tongue bracket seen in Figure 1 with a 10mm wrench.
- B. Place the receiver bracket into position as shown in Figure 2 with tabs facing out. Then tighten bolts on clamp with the allen & 10mm wrenches.
- C. Replace the bolts that you previously removed from the tongue bracket, and tighten them. Be sure that the nuts are in the plastic cowling on the other side.

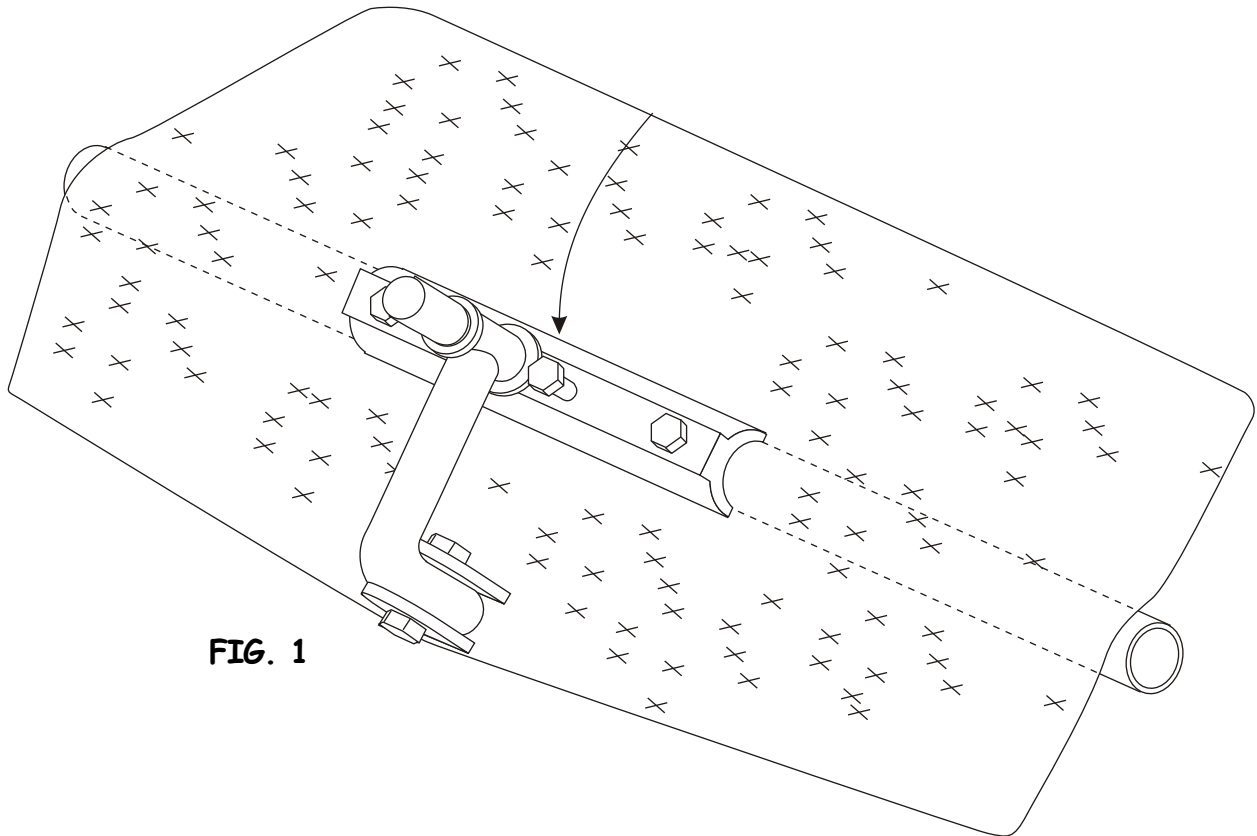


FIG. 1

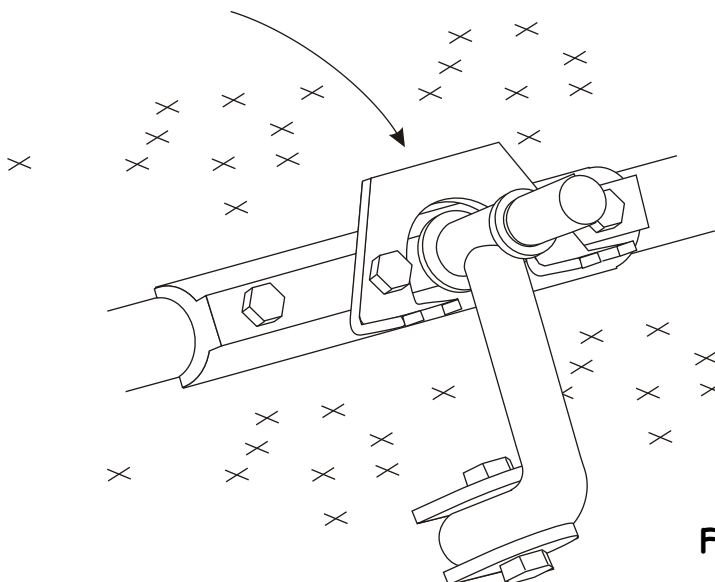
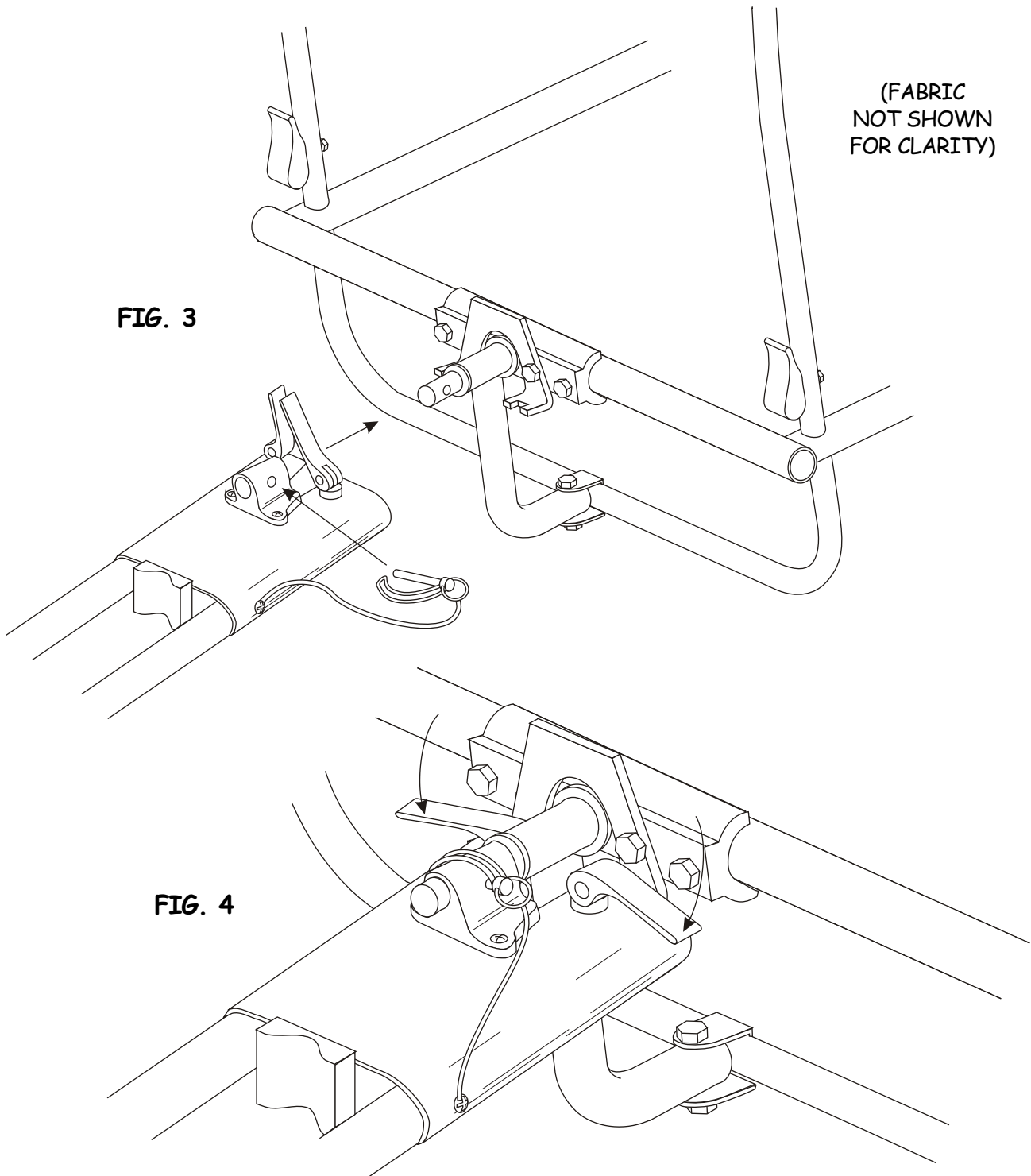


FIG. 2

Step 2. Installing Receiver Bracket

- A. With the two cam locks in the open position, slide the fork assembly onto the shaft and into the slots of the bracket you previously installed in step one, as shown in Figure 3.
- B. With the fork assembly placed firmly against the trailer, lock down the cam levers as shown in Figure 4.
- C. Check for side play. If you can move fork from side to side then repeat steps 2A & 2B.
- D. Secure safety pin as shown in figure 4.



Step 2A. Installing Front Wheel

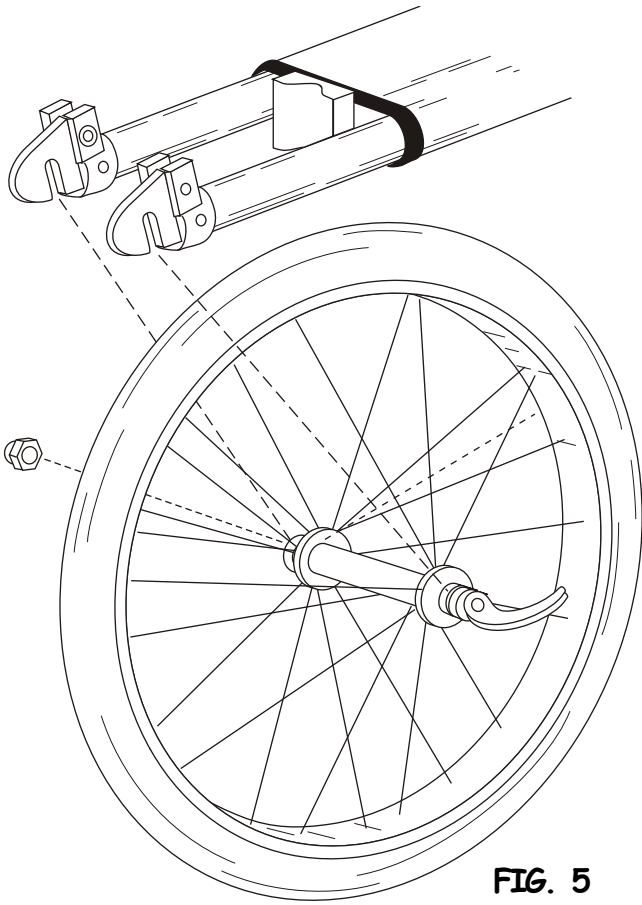


FIG. 5

A. With cam lever in open position (Figure 5), slide wheel into fork slots and close lever (Figure 6). If lever closes too easily, then open lever, tighten knob, and reclose.

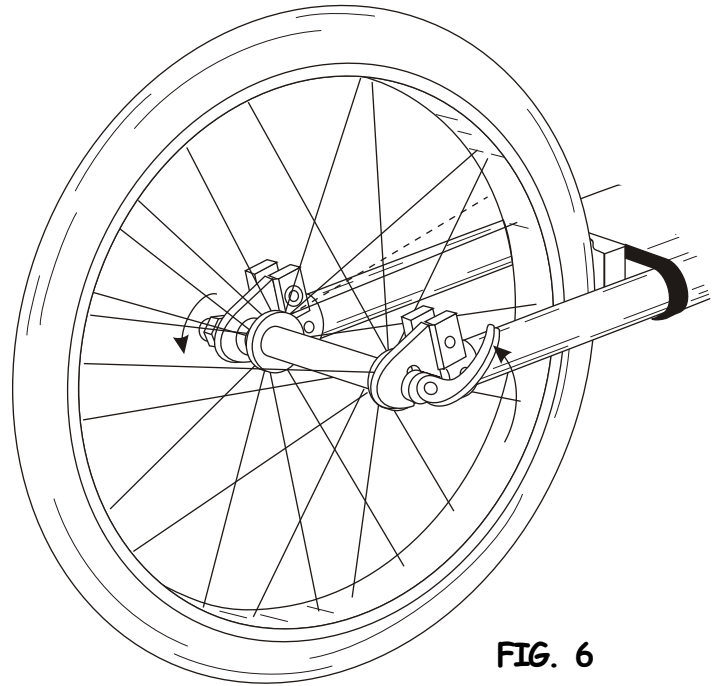


FIG. 6

Step 3. Brake Cable Routing

A. Route cable as shown in Figure 7 keeping it within the fabric loops starting with bottom corner and coming out at the 5th loop (Papoose only has one loop Figure 8).

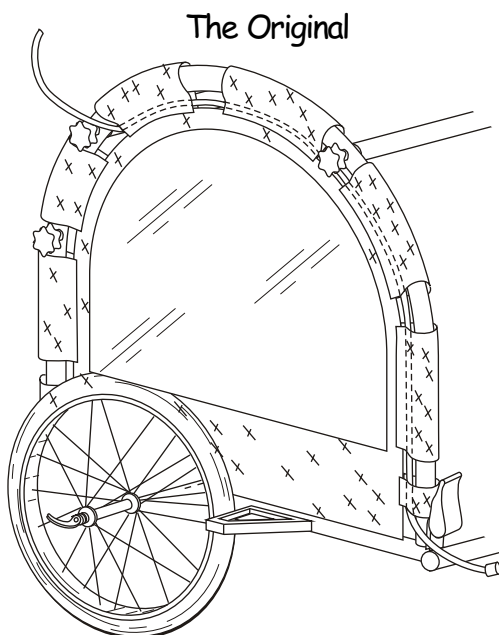


FIG. 7

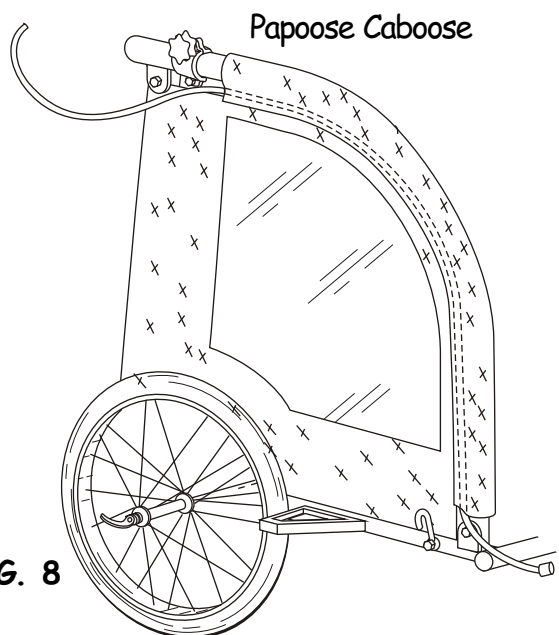


FIG. 8

Step 4. Installing Handle & Braces

(For the Papoose Caboose model see page 6, for Lil' Trooper model see step 4B)

- A. First remove the cross bar (A) from the trailer (the bar that holds the seat back up).
- B. Then slide the eyelets onto the cross bar ends with bend in handle facing upward as shown in Figure 9.
- C. Now you can replace the cross bar to its original position. To do this you will need to slide the eyelets to one side in order to slide cross bar onto its bolt as shown in Figure 10. Tighten the cross bar knobs.
- D. Install and attach wrist strap as shown in Fig. 10.

