

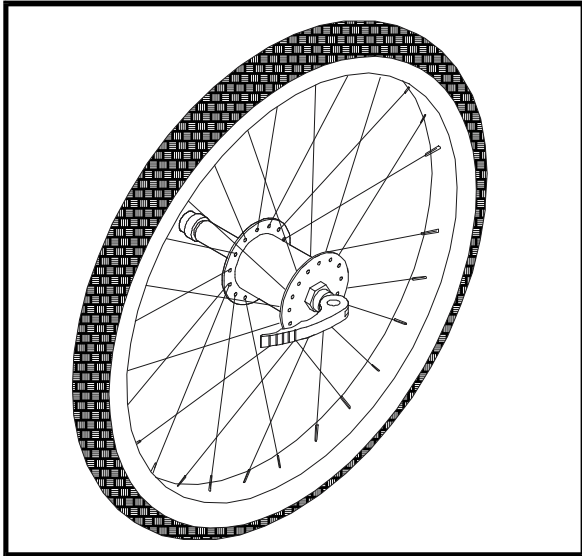


1998 QUICK RELEASE ("QR") AXLE UPGRADE

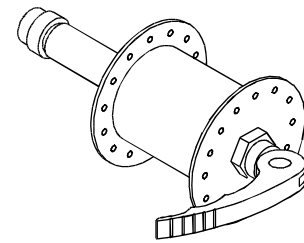
For All **KOOL-STRIDE** Strollers With **QR** Rod Axles
PATENT PENDING

INSTALLATION & ADJUSTMENT INSTRUCTIONS

Please read & save all instructions contained in this booklet.
Examine all carton contents and wrappings carefully before assembly.

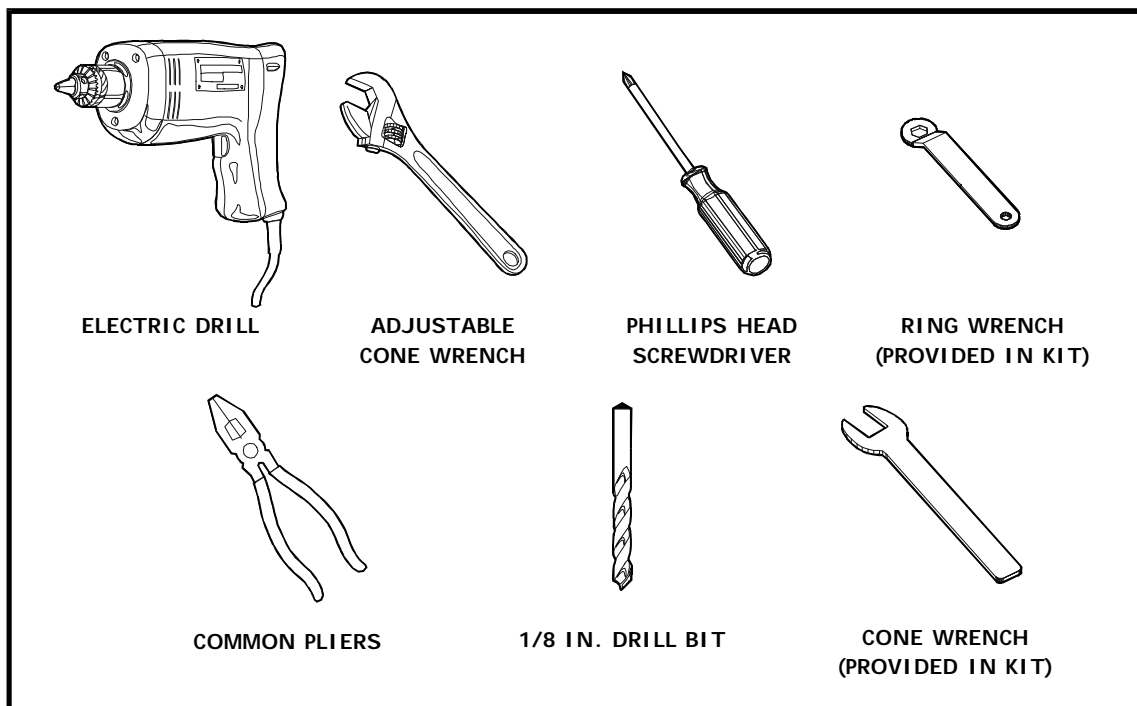


Quick release locking hubs make set-up tool free and quick. No more getting down on your hands and knees!



ASSEMBLY INSTRUCTIONS

The tools required to modify and upgrade to new '98 QR Axle are shown below. It is important to use the right tool for specific procedures.

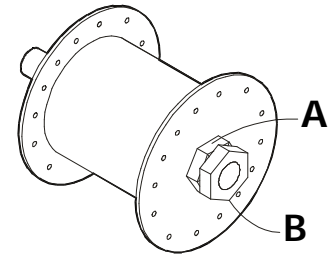


REMOVAL AND INSTALLATION OF AXLES

REMOVAL OF THE OLD STYLE AXLE (FIG. 1-2)

- Hold the inner jam nut **A** with the wrench provided in the kit. If your kit did not come with a wrench please call our 800# to have one sent to you.
- While holding the inner jam nut **A** loosen the outer jam nut **B** with the appropriate wrench (such as an adjustable wrench). This would be counter clockwise to loosen the nut (FIG. 2) .
- Remove both nuts and extract the axle **C**. You may need to tap it with a hammer.

FIG. 1



INSTALL THE NEW AXLE - (FIG.3)

- First thing to do is disassembling all the parts from the new "hollow" axle.
- Slide the new hollow axle **F** all the way into the hole in the hub **G**. You may need to tap the axle a little to seat it.

FIG. 2

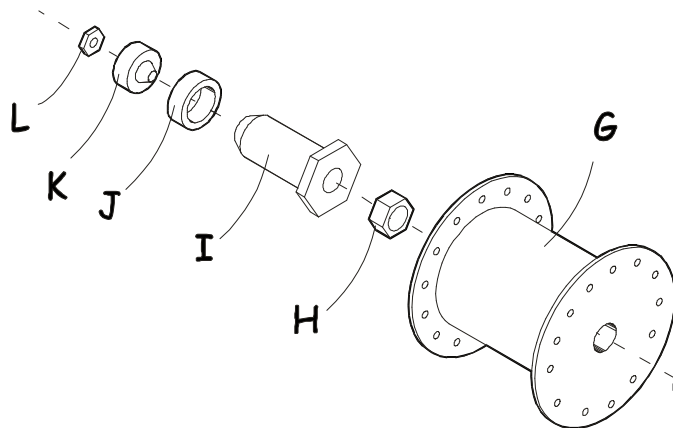
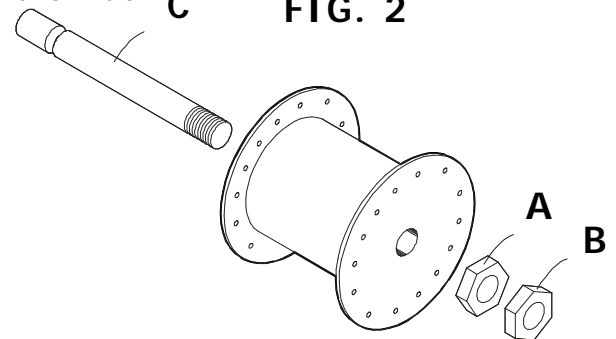
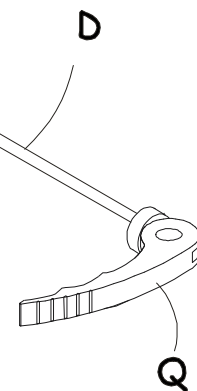


FIG. 3

- Thread the jam nut **H** onto the other side of the axle until snug against the hub **G** .
- Thread the shank **I** onto the axle **F** until snug against the jam nut. Hold the jam nut **H** with the cone wrench (this is the one provided in the kit). Then tighten the shank **I** against it .



NOTE:

This would be clockwise for the shank **I** and counter clockwise for the jam nut **H**. You only need to tighten moderately.

- Once you have inserted the skewer **D**, you can place the remaining parts onto it as shown in FIG. 3.

REMOVAL AND INSTALLATION OF AXLE END

REMOVE OLD STYLE AXLE END

- To remove the old plastic axle end **M**, simply align the new plastic end **T** with the aluminum tube **N** on the outside in order to see how deep it extends inside the tube **N**. This will allow you to see which rivets need to be removed. (SEE FIG. 4A).
- Once you have established which rivets need to be removed, you will now need to drill them out with an 1/8 inch drill bit. Do this by drilling completely through the rivet **R**, this should remove the entire rivet. Check your holes to make sure the entire rivet has been removed. Then proceed with the next step.

NOTE:

Be sure to drill all the way through the rivet or the axle end won't come out.

- Clamp onto the end of the plastic axle end **M** with a pair of pliers and pull it out (FIG. 4B).

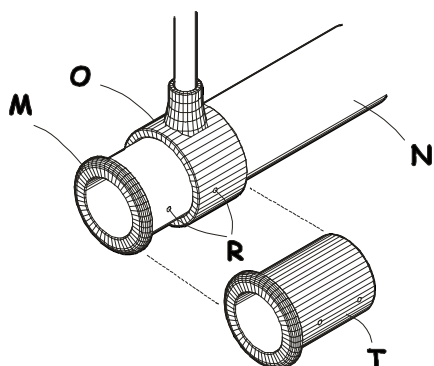


FIG. 4A

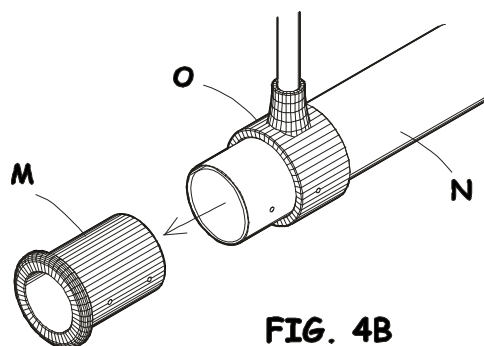


FIG. 4B

INSTALL THE NEW AXLE END

- Press the new axle end into the hole in the axle tube **N**. The axle end will need to line up with a notch in the aluminum tube **N** (It will only go all the way in when it is lined up correctly).
- With the axle end in place drill through the open rivet holes so that there are new holes in the new plastic axle and for the replacement screw to get started.
- Drive the new replacement screws into the axle tube end. (The replacement screws come in the kit) .

NOTE:

If you are performing this on a LIL' DEUCE (double stroller) there will be four rivets to drill out on the aluminum tube. If you are installing this kit on a single KOOL-STRI DE you will have extra screws left over (THIS IS OK).

- Repeat this for the other side .

ADJUSTING THE NEW AXLE

- Now it is necessary to adjust the new axle so that it clamps down correctly. Simply hold the small nyloc nut **L** with a 8mm ring **P** or a pair of needle nose pliers and turn the cam lever **Q** on the opposite end of the skewer **D** until the swedge cap **K** and the shank **I** begin to spread the split ring **J** (These parts are shown in FIG. 3). Be sure to have the cam lever **Q** in the closed position while turning it. (This will be the position it is shown in FIG. 5).

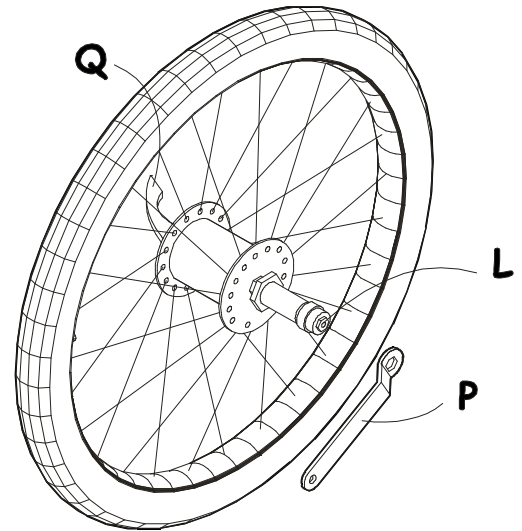


FIG. 5

- 1) Insert the wheel axle and wheel assembly into the hole on the axle end with the cam lever open.
 - 1a) Close the cam lever (you should feel some resistance) then pull on the wheel with a fair amount of pressure (pull it hard) . If the wheel does not pull out then you are done.
 - 1b) If the wheel pulls out even a little, you need to further adjust the tension of the skewer. To do this, remove the wheel and proceed as follows:
 - Hold the Nyloc nut with the pliers or socket.
 - Turn the cam lever clockwise 1/2 to 1 turn.
 - Retry the "fit of the wheel process" .

TECHNICAL ASSISTANCE:

If you have any questions or a need for technical assistance please call 1-800-247-9754 and request a KOOL-STOP technician.

- Don't forget to always keep safety in mind when using your KOOL-STRIDE . Refer to your owners manual for safety tips .

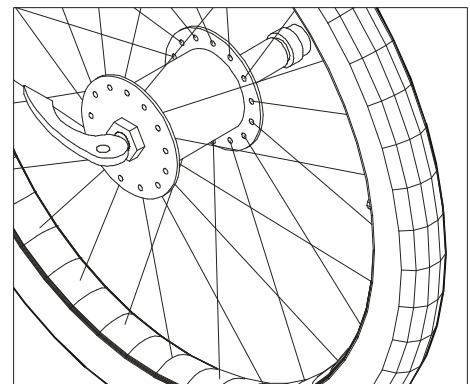
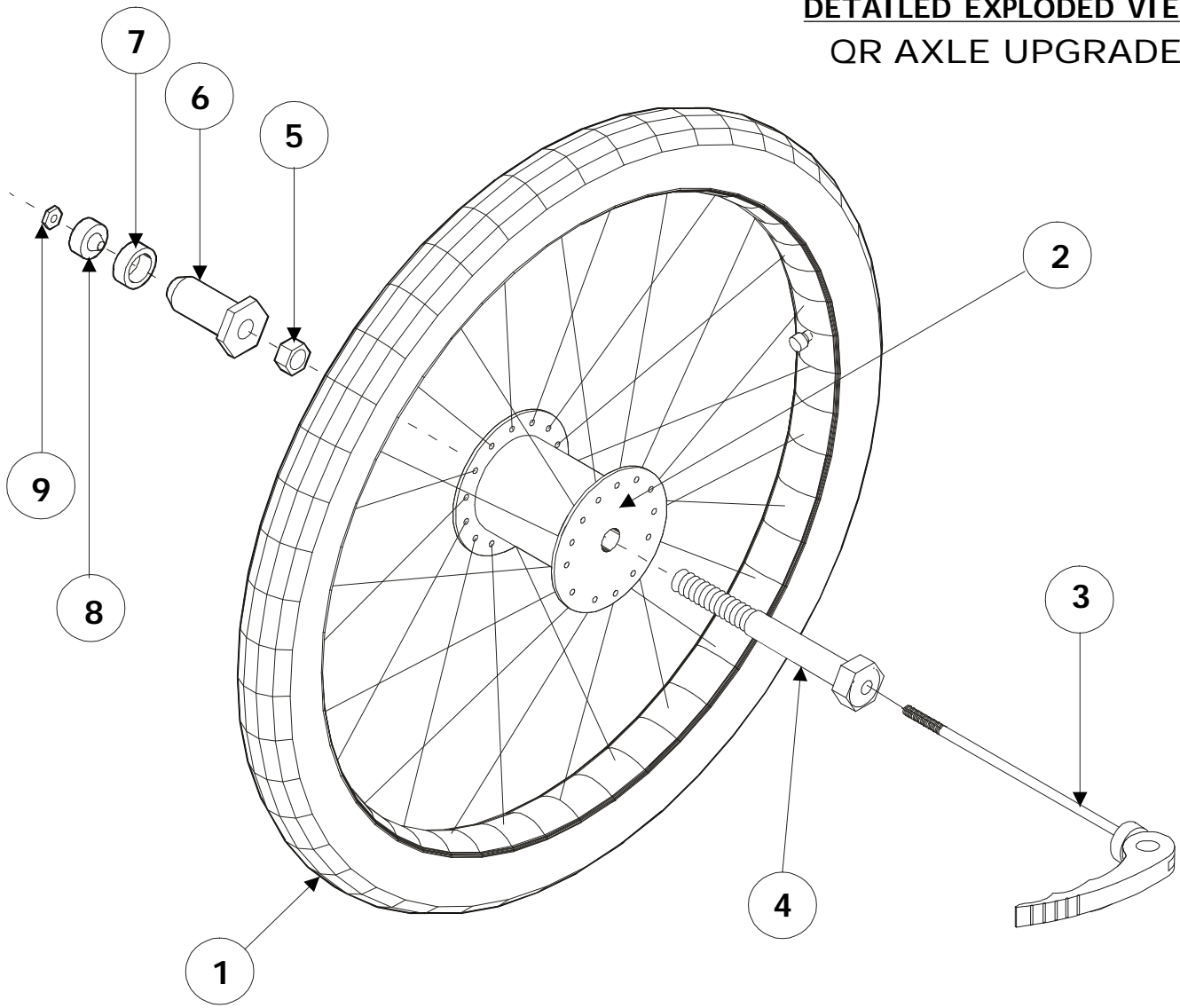


FIG. 6

**DETAILED EXPLODED VIEW
QR AXLE UPGRADE**



PARTS LIST			
No.	PART No.	DESCRIPTION	QTY.
1	QR-1100	WHEEL	1
2	QR-1120	HUB	1
3	QR-1130	SKEWER	1
4	QR-1150	HOLLOW AXLE	1
5	QR-1160	JAM NUT	1
6	QR-1170	SHANK (ALUMI NUM)	1
7	QR-1180	SPLIT RING (PLASTIC)	1
8	QR-1190	SWEDGE CAP	1
9	QR-1200	NYLOCK NUT	1